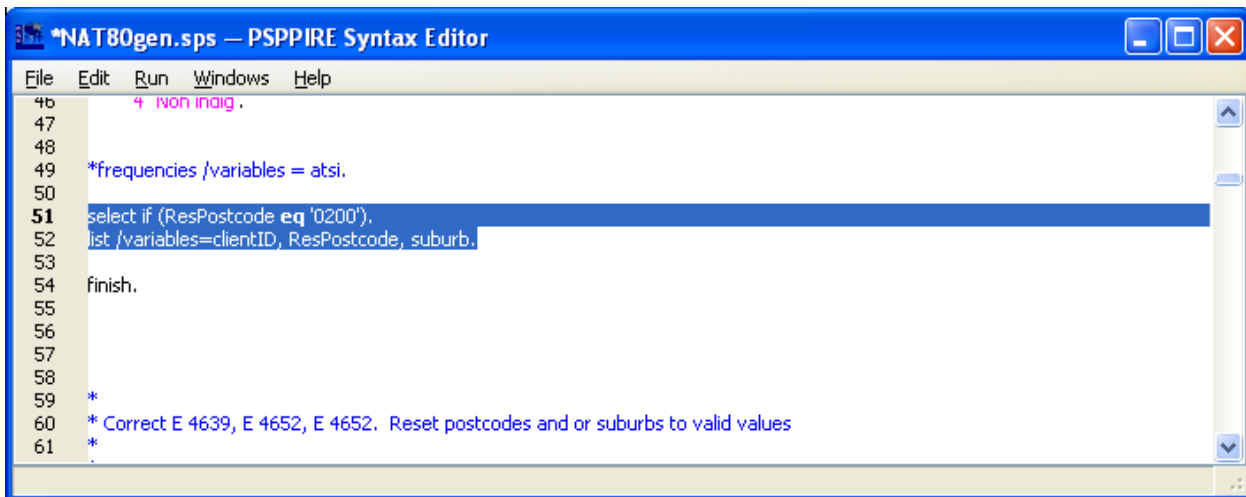
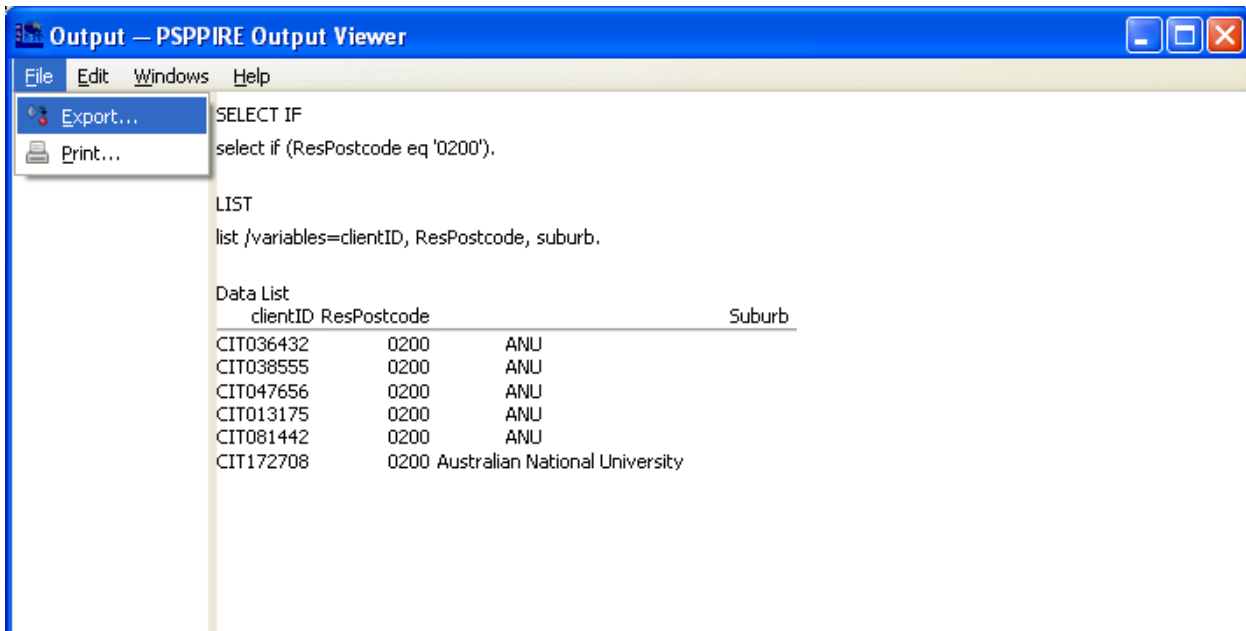


Run the list function:



```
*NAT80gen.sps — PSPP Syntax Editor
File Edit Run Windows Help
46 + non indig.
47
48
49 *frequencies /variables = atsi.
50
51 select if (ResPostcode eq '0200').
52 list /variables=clientID, ResPostcode, suburb.
53
54 finish.
55
56
57
58
59 *
60 * Correct E 4639, E 4652, E 4652. Reset postcodes and or suburbs to valid values
61 *
```

Here is the output to the LIST and it is displayed **perfectly** but the text cannot be selected from the viewer. At this point File > Export is selected and saved to a Text file as shown in the dialogue.



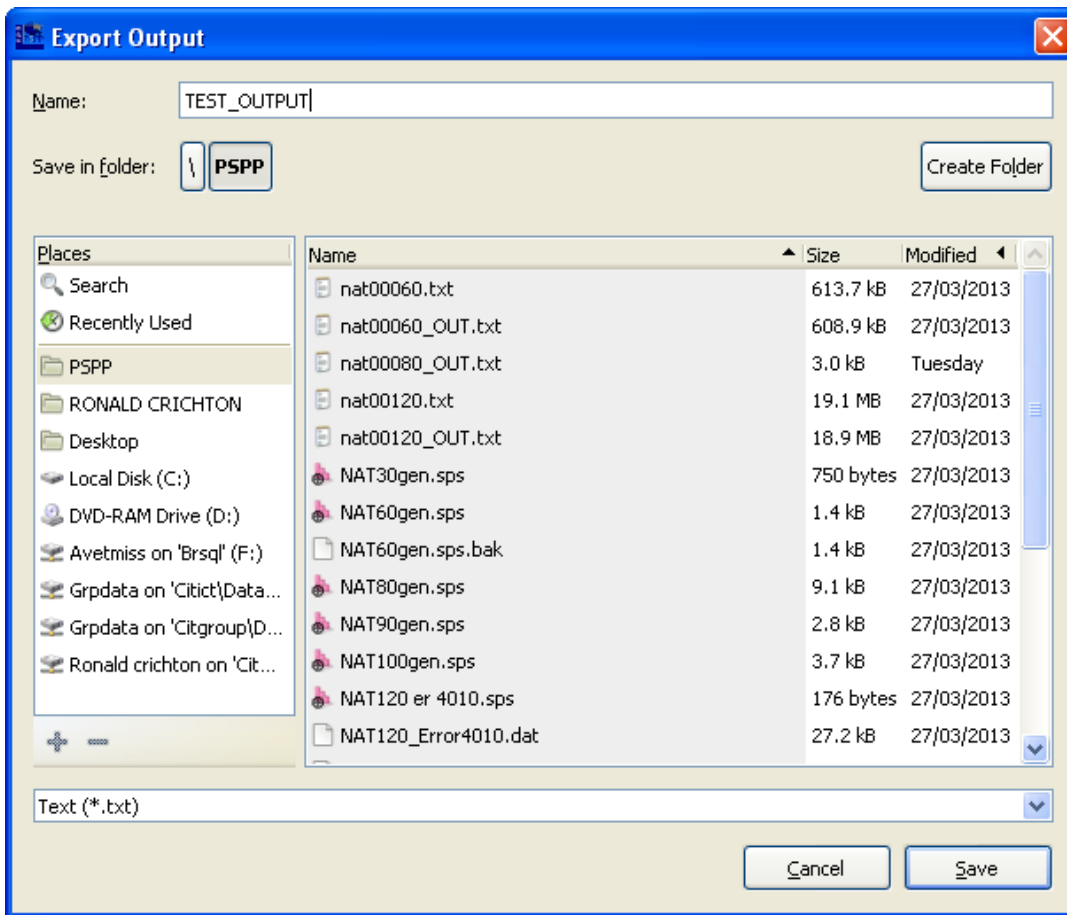
```
Output — PSPP Output Viewer
File Edit Windows Help
Export...
Print...

SELECT IF
select if (ResPostcode eq '0200').

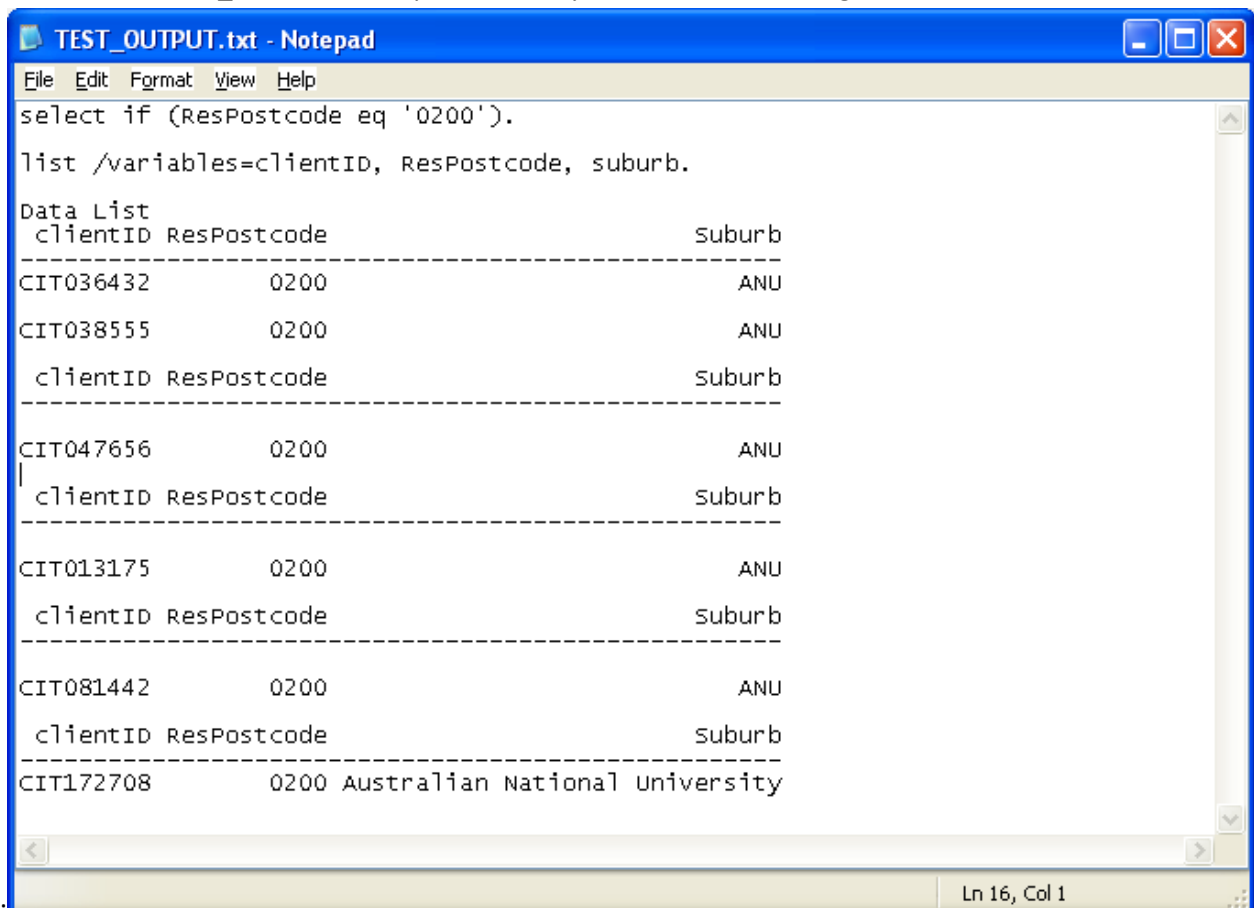
LIST
list /variables=clientID, ResPostcode, suburb.

Data List
clientID ResPostcode Suburb
-----
CIT036432 0200 ANU
CIT038555 0200 ANU
CIT047656 0200 ANU
CIT013175 0200 ANU
CIT081442 0200 ANU
CIT172708 0200 Australian National University
```

Dialogue to create a file of the Output Viewer:



The file is renamed to TEST_OUTPUT.txt. Open the newly created Text file using Windows



Notepad: